

State of Wyoming Corner Record

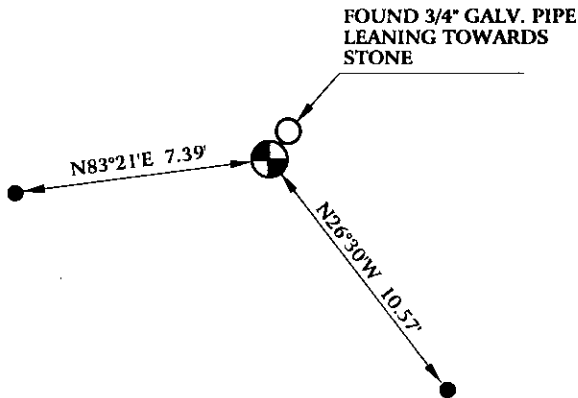
(In compliance with the *CORNER PERPETUATION AND FILING ACT*, Wyoming Statutes, 1997 Section 33-29-140 et. seq., and the Rules and Regulations of the Board of Professional Engineers and Professional Land Surveyors)

Reverse side of this form may be used if more space is needed.

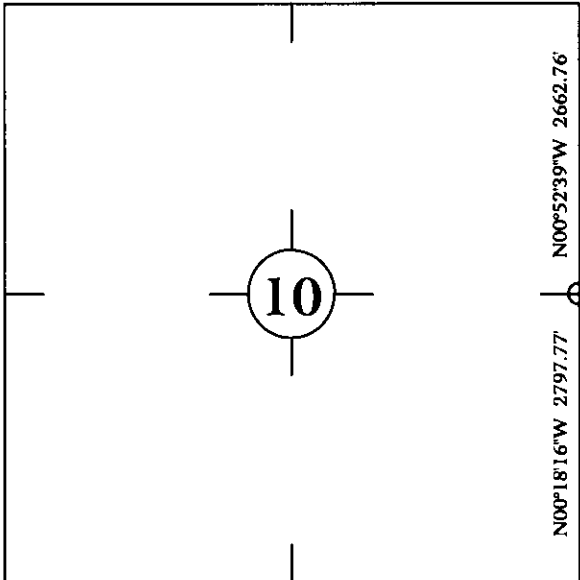
Record of original survey and citation of source of historical information (if corner is lost or obliterated). Description of corner monumentation evidence found and/or monument and accessories established to perpetuate the location of this corner. Sketch of relative location of monument, accessories, and reference points with course and distance to adjacent corner(s) (if determined in this survey). Method and rationale for reestablishment of lost or obliterated corner.

ORIGINAL CALL FOR 14" X 9" X 7" BOULDER STONE.

FOUND 14" X 12" X 7" STONE WITH FAINT 1/4 MARKED ON WEST FACE, NEXT TO A 3/4" GALV. PIPE IN MOUND OF STONES.
SET 5/8" X 24" REBAR WITH 1 1/2" ALUMINUM CAP P.L.S. 6099 FOR TIES AS SHOWN BELOW.



Monument location



Monument Inscription

Date of Field Work: April 13, 2005 Office Reference: GALLEGOS05.pro

Cross Index Plat

	1	2	3	4	5	6	7	8	9	10	11	12	13	14	15	16	17	18	19	20	21	22	23	24	25
A																									
B																									
C	6			5				4					3					2							1
D																									
E																									
F																									
G																									
H																									
I																									
J																									
K																									
L																									
M																									
N																									
O																									
P																									
Q																									
R																									
S																									
T																									
U																									
V																									
W																									
X																									
Y																									
Z																									

Firm/Agency, Address
 CHARLES H. RUSSELL P.L.S. 6099
 AMERICAN WEST LAND SURVEYING CO.
 29 SOUTH 4TH AVENUE
 BRIGHTON, CO 80601

Telephone Number:
 303-659-1532

This corner record was prepared
 by me or under my direction
 and supervision.
SEAL & SIGNATURE



RECORDED 6/22/2005 AT 12:35 PM REC# 420218 BK# 1888 PG# 1088
 DEBRA K. LATHROP, CLERK OF LARAMIE COUNTY, WY PAGE 1 OF 1

Corner Name: East 1/4 Corner, Section 10, T 12 N, R 69 W, 6th P.M.

Cross-Index No.: G-17

County: Laramie

SBRPEPLS/PLSW: March 1994; PLSW January 1998